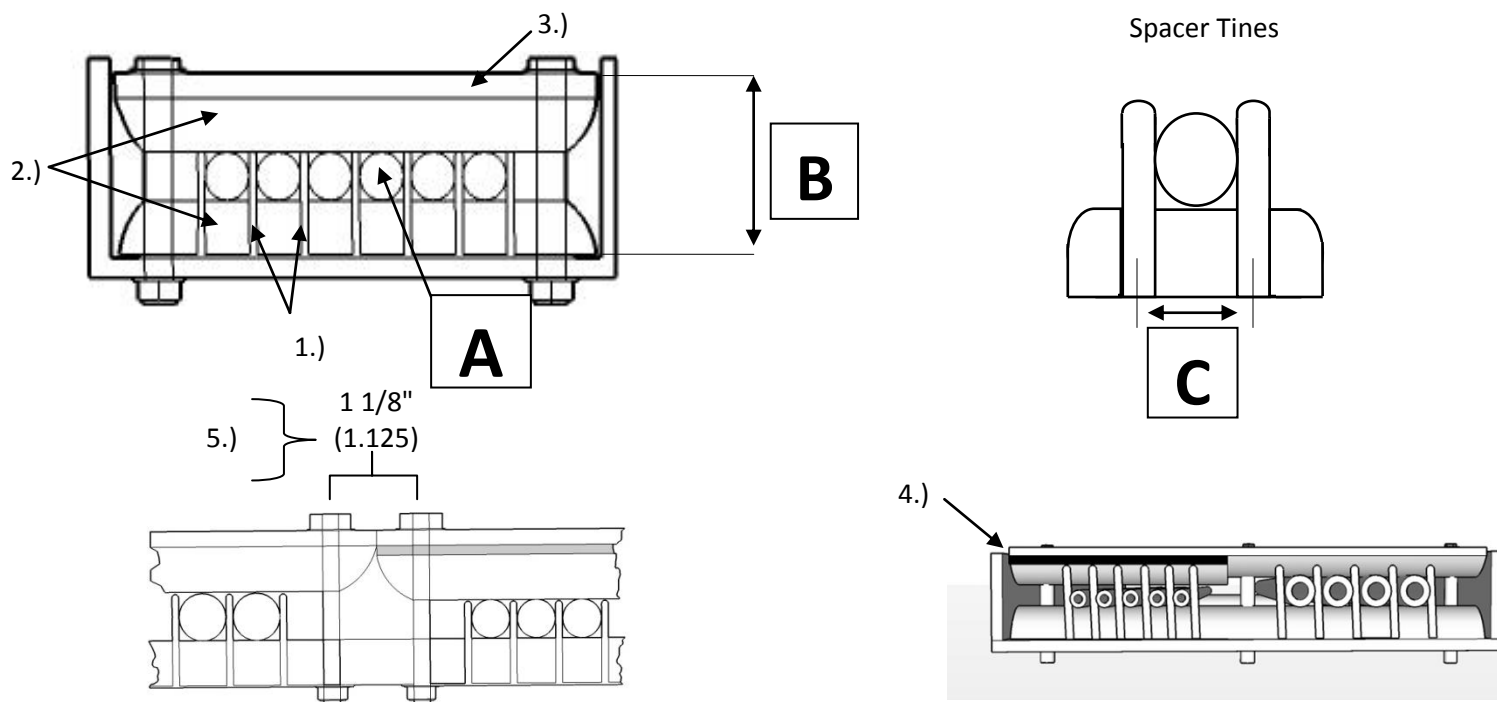


T-SEP Assembly for 10" Channel Tray



Hardware Mounting Hole Access Diameter 3/8 (.375)	# of Mounted Hardware Access Holes	Hole Location	Tube Access Area
Hardware Used 1/4" (.250)	2	(2) @ 3/8" (.375) ea end ϵ Typ.	8 5/8" (8.625)
Tolerance 1/8" (.125)	3	(2) @ 3/8" (.375) ea end ϵ Typ.	8 1/4" (8.250)
		(1) @ 4 5/8" (4.625) middle ϵ Typ.	
	4	(2) @ 3/8" (.375) ea end ϵ Typ.	7 7/8" (7.875)
		(2)- Specify	
	5	(2) @ 3/8" (.375) ϵ Typ.	7 1/2" (7.500)
		(3)- Specify	

A	B	C				
Tube Diameter	Height	Spacer Tine ϵ TYP.	Max tube 2 hole configuration	Max tube 3 hole configuration	Max tube 4 hole configuration	Max tube 5 hole configuration
1/4"	1 1/2"	.375"	23	22	21	20
3/8"	1 5/8"	.500"	17	16	15	15
1/2"	1 3/4"	.625"	13	13	12	12
3/4"	2"	.875"	9	9	9	8
1"	2 1/4"	1.250"	6	6	6	6



Notes:

- 1.) SS316 Pneumatic Tubing Spacers: 1/4" TS-250M, 3/8 TS-375M, 1/2 TS-500M, 3/4 TS-750M, and 1" TS-100M also available with epoxy powder coated finish to Mil Spec # MIL-C-24712
- 2.) I-ROD: 1" half round is a UV-Stable, high impact thermoplastic Mfg. Deepwater Corrosion.
- 3.) Flat Bar to be 1" wide x 1/4" thick, stainless steel grade 316 or aluminum 6061-T6. Other thickness available upon request.
- 4.) Bar shims (1/8" thick x 1" wide) or flat washers are used to raise top flat bar retainer to level when tube size varies.
- 5.) When two T-SEP Assemblies rest in tandem, there exists a 1 1/8 (1.125) inch space where the assemblies meet. 1 1/8" (1.125) must be deducted from overall tube access area for each occurrence.