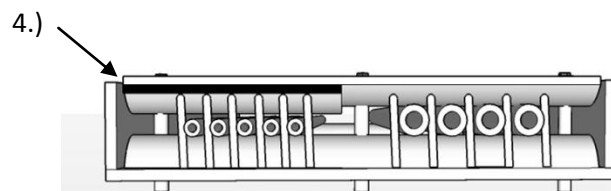
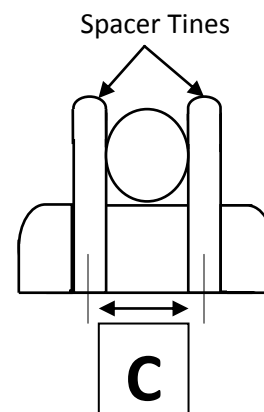
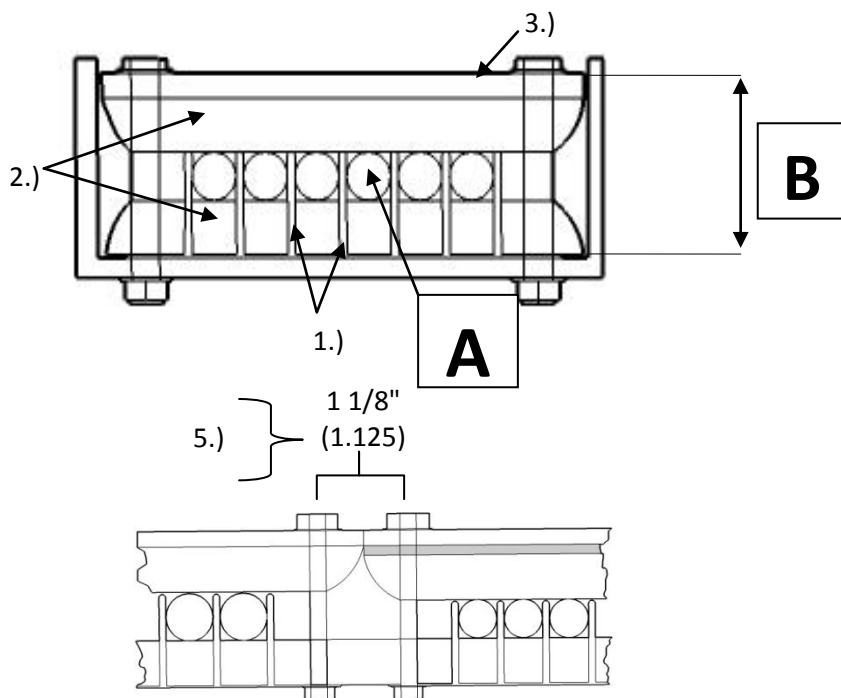


# T-SEP Assembly for 12" Ladder Tray



Hardware Mounting Hole Access Diameter 3/8 (.375)	# of Mounted Hardware Access Holes	Hole Location	Tube Access Area
Hardware Used 1/4" (.250)	3	(2) @ 3/8" (.375) ea end $\epsilon_{Typ.}$	10 1/2" (10.500)
		(1) @ 5 7/16" (5.438) $\epsilon_{Typ.}$	
Tolerance 1/8" (.125)	4	(2) @ 3/8" (.375) ea end $\epsilon_{Typ.}$	10 1/8" (10.125)
		(2) - Specify	
	5	(2) @ 3/8" (.375) $\epsilon_{Typ.}$	9 3/4" (9.750)
		(3) - Specify	
	6	(2) @ 3/8" (.375) ea end $\epsilon_{Typ.}$	9 3/8" (9.375)
		(4) - Specify	

A	B	C				
Tube Diameter	Height	Spacer Tine $\epsilon_{Typ.}$	Max tube 3 hole configuration	Max tube 4 hole configuration	Max tube 5 hole configuration	Max tube 6 hole configuration
1/4"	1 1/2"	.375"	28	27	26	25
3/8"	1 5/8"	.500"	21	20	19	18
1/2"	1 3/4"	.625"	16	16	15	15
3/4"	2"	.875"	12	11	11	10
1"	2 1/4"	1.250"	8	8	7	7



## Notes:

- 1.) SS316 Pneumatic Tubing Spacers: 1/4" TS-250M, 3/8 TS-375M, 1/2 TS-500M, 3/4 TS-750M, and 1" TS-100M also available with epoxy powder coated finish to Mil Spec # MIL-C-24712
- 2.) I-ROD: 1" half round is a UV-Stable, high impact thermoplastic Mfg. Deepwater Corrosion.
- 3.) Flat Bar to be 1" wide x 1/4" thick, stainless steel grade 316 or aluminum 6061-T6. Other thickness available upon request.
- 4.) Bar shims (1/8" thick x 1" wide) or flat washers are used to raise top flat bar retainer to level when tube size varies.
- 5.) When two T-SEP Assemblies rest in tandem, there exists a 1 1/8 (1.125) inch space where the assemblies meet. 1 1/8" (1.125) must be deducted from overall tube access area for each occurrence.

