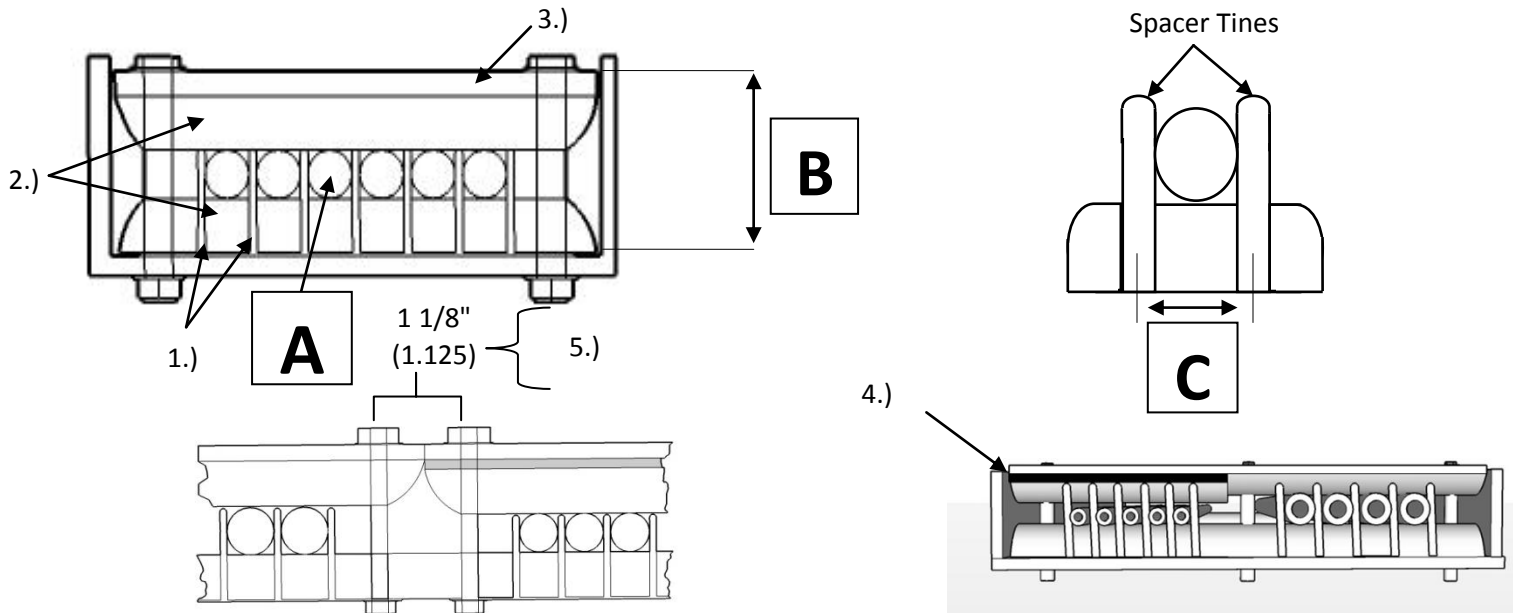


T-SEP Assembly for 18" Ladder Tray



Hardware Mounting Hole Access Diameter 3/8 (.375)	# of Mounted Hardware Access Holes	Hole Location	Tube Access Area
Hardware Used 1/4" (.250)	3	(2) Location 3/8" (.375) ϵ Typ.	16 1/2" (16.500)
		(1) @ 5 7/16" (8.438) middle ϵ Typ.	
Tolerance 1/8" (.125)	4	(2) @ 3/8" (.375) ϵ Typ.	16 1/8" (16.125)
		(2) @ 5 3/4" (5.750) ϵ Typ.	
	5	(2) @ 3/8" (.375) ϵ Typ. (3)- Specify	15 3/4" (15.750)
	6	(2) @ 3/8" (.375) ϵ Typ. (4)- Specify	15 3/8" (15.375)
	7	(2) @ 3/8" (.375) ea end ϵ Typ. (5)- Specify	15" (15.000)
	8	(2) @ 3/8" (.375) ϵ Typ. (6)- Specify	14 5/8" (14.625)

A	B	C	Max tube 3 hole configuration	Max tube 4 hole configuration	Max tube 5 hole configuration	Max tube 6 hole configuration	Max tube 7 hole configuration	Max tube 8 hole configuration
Tube Diameter	Height	Spacer Tine ϵ TYP.						
1/4"	1 1/2"	.375"	44	43	42	41	40	39
3/8"	1 5/8"	.500"	33	32	31	30	30	29
1/2"	1 3/4"	.625"	26	25	25	24	24	23
3/4"	2"	.875"	18	18	18	17	17	16
1"	2 1/4"	1.250"	13	12	12	12	12	11



Notes:

- 1.) SS316 Pneumatic Tubing Spacers: 1/4" TS-250M, 3/8 TS-375M, 1/2 TS-500M, 3/4 TS-750M, and 1" TS-100M also available with epoxy powder coated finish to Mil Spec # MIL-C-24712
- 2.) I-ROD: 1" half round is a UV-Stable, high impact thermoplastic Mfg. Deepwater Corrosion.
- 3.) Flat Bar to be 1" wide x 1/4" thick, stainless steel grade 316 or aluminum 6061-T6. Other thickness available upon request.
- 4.) Bar shims (1/8" thick x 1" wide) or flat washers are used to raise top flat bar retainer to level when tube size varies.
- 5.) When two T-SEP Assemblies rest in tandem, there exists a 1 1/8 (1.125) inch space where the assemblies meet. 1 1/8" (1.125) must be deducted from overall tube access area for each occurrence.

