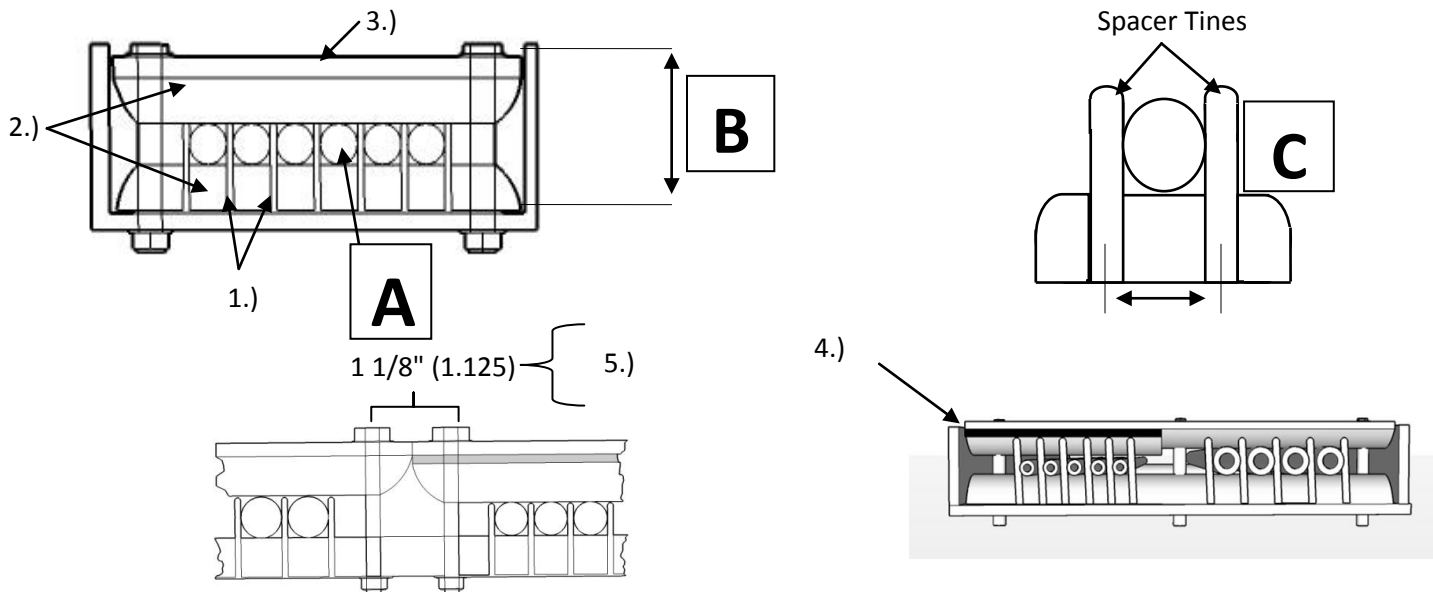


T-SEP Assembly for 24" Ladder Tray



Hardware Mounting Hole Access Diameter 3/8 (.375)	# of Mounted Hardware Access Holes	Hole Location	Tube Access Area
Hardware Used 1/4" (.250)	3	(2) @ 3/8" (.375) ϵ Typ.	22 1/2" (22.500)
		(1) @ 11 7/16" (11.438) ϵ Typ.	
Tolerance 1/8" (.125)	4	(2) @ 3/8" (.375) ϵ Typ.	22 1/8" (22.125)
		(2) @ 7 5/8" (7.625) ϵ Typ.	
	5	(2) @ 3/8" (.375) ϵ Typ.	21 3/4" (21.750)
		(3) @ 5 13/16" (5.125) ϵ Typ.	
	6	(2) @ 3/8" (.375) ϵ Typ.	21 3/8" (21.375)
		(4)- Specify	
	7	(2) @ 3/8" (.375) ea end ϵ Typ.	21" (21.000)
		(5)- specify	
8	(2) @ 3/8" (.375) ea end ϵ Typ.	20 5/8" (20.625)	
	(6)- specify		

A Tube Diameter	B Height	C Spacer Time ϵ TYP.	Max tubes					
			3 hole configuration	4 hole configuration	5 hole configuration	6 hole configuration	7 hole configuration	8 hole configuration
1/4"	1 1/2"	.375"	60	59	58	57	56	54
3/8"	1 5/8"	.500"	45	44	43	42	42	41
1/2"	1 3/4"	.625"	36	35	34	34	33	33
3/4"	2"	.875"	25	25	24	24	24	23
1"	2 1/4"	1.250"	18	17	17	17	16	16



Notes:

- 1.) SS316 Pneumatic Tubing Spacers: 1/4" TS-250M, 3/8 TS-375M, 1/2 TS-500M, 3/4 TS-750M, and 1" TS-100M also available with epoxy powder coated finish to Mil Spec # MIL-C-24712
- 2.) I-ROD: 1" half round is a UV-Stable, high impact thermoplastic Mfg. Deepwater Corrosion.
- 3.) Flat Bar to be 1" wide x 1/4" thick, stainless steel grade 316 or aluminum 6061-T6. Other thickness available upon request.
- 4.) Bar shims (1/8" thick x 1" wide) or flat washers are used to raise top flat bar retainer to level when tube size varies.
- 5.) When two T-SEP Assemblies rest in tandem, there exists a 1 1/8 (1.125) inch space where the assemblies meet. 1 1/8" (1.125) must be deducted from overall tube access area for each occurrence.