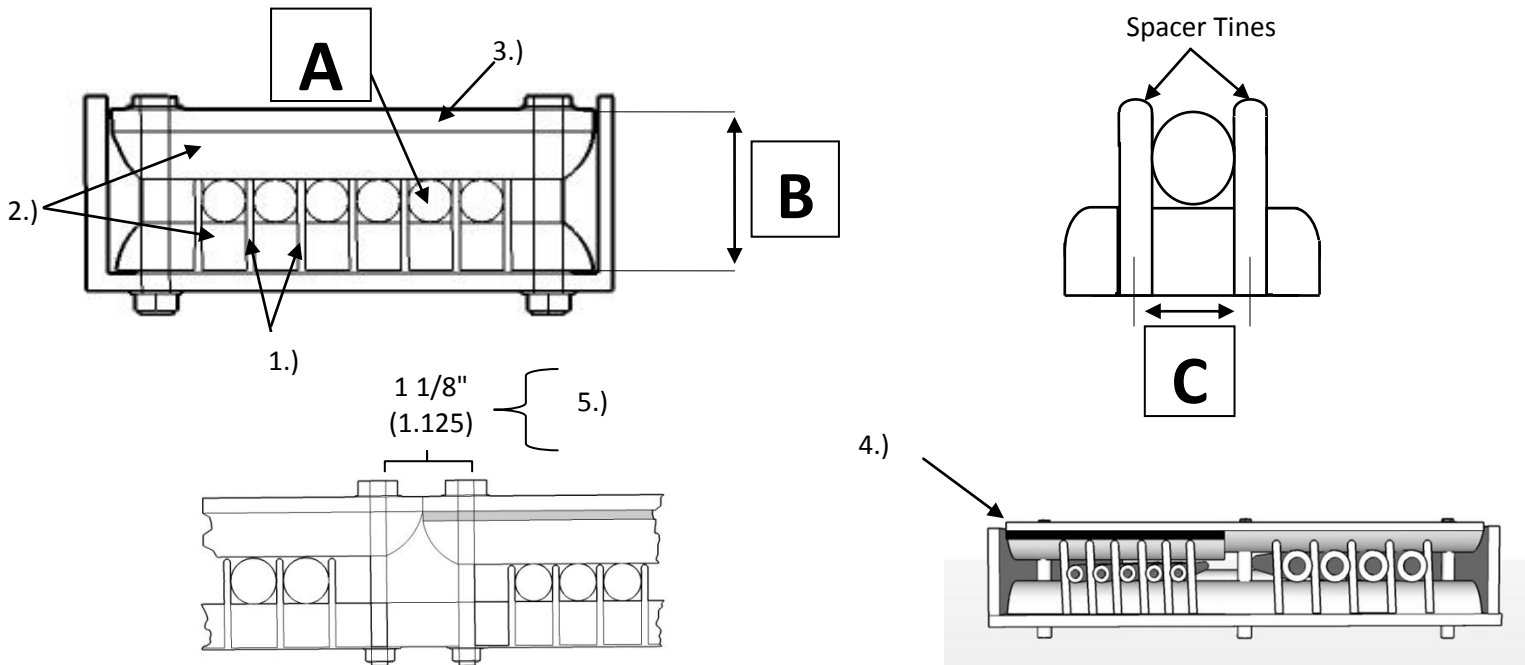


T-SEP Assembly for 30" Ladder Tray



Hardware Mounting Hole Access Diameter 3/8 (.375)	# of Mounted Hardware Access Holes	Hole Location		Tube Access Area
Hardware Used 1/4" (.250)	4	(2) @ 3/8" (.375) ϵ Typ.	or specify	28 1/8" (28.125)
		(2) @ 9 5/8" (9.625) ϵ Typ.		
Tolerance 1/8" (.125)	5	(2) @ 3/8" (.375) ϵ Typ.	or specify	27 3/4" (27.750)
		(3) @ 5 13/16" (5.8125) ϵ Typ.		
	6	(2) @ 3/8" (.375) ϵ Typ. (4)- Specify	27 3/8" (27.375)	
7	7	(2) @ 3/8" (.375) ϵ Typ.	(5)- specify	27" (27.000)
8	8	(2) @ 3/8" (.375) ϵ Typ.	(6)- specify	26 5/8" (26.625)

A	B	C	Max tube 4 hole configuration	Max tube 5 hole configuration	Max tube 6 hole configuration	Max tube 7 hole configuration	Max tube 8 hole configuration
Tube Diameter	Height	Spacer Tine ϵ TYP.					
1/4"	1 1/2"	.375"	75	74	73	72	71
3/8"	1 5/8"	.500"	56	55	54	54	53
1/2"	1 3/4"	.625"	45	44	43	43	42
3/4"	2"	.875"	32	31	31	30	30
1"	2 1/4"	1.250"	22	22	22	21	21



Notes:

- 1.) SS316 Pneumatic Tubing Spacers: 1/4" TS-250M, 3/8 TS-375M, 1/2 TS-500M, 3/4 TS-750M, and 1" TS-100M also available with epoxy powder coated finish to Mil Spec # MIL-C-24712
- 2.) I-ROD: 1" half round is a UV-Stable, high impact thermoplastic Mfg. Deepwater Corrosion.
- 3.) Flat Bar to be 1" wide x 1/4" thick, stainless steel grade 316 or aluminum 6061-T6. Other thickness available upon request.
- 4.) Bar shims (1/8" thick x 1" wide) or flat washers are used to raise top flat bar retainer to level when tube size varies.
- 5.) When two T-SEP Assemblies rest in tandem, there exists a 1 1/8 (1.125) inch space where the assemblies meet. 1 1/8" (1.125) must be deducted from overall tube access area for each occurrence.