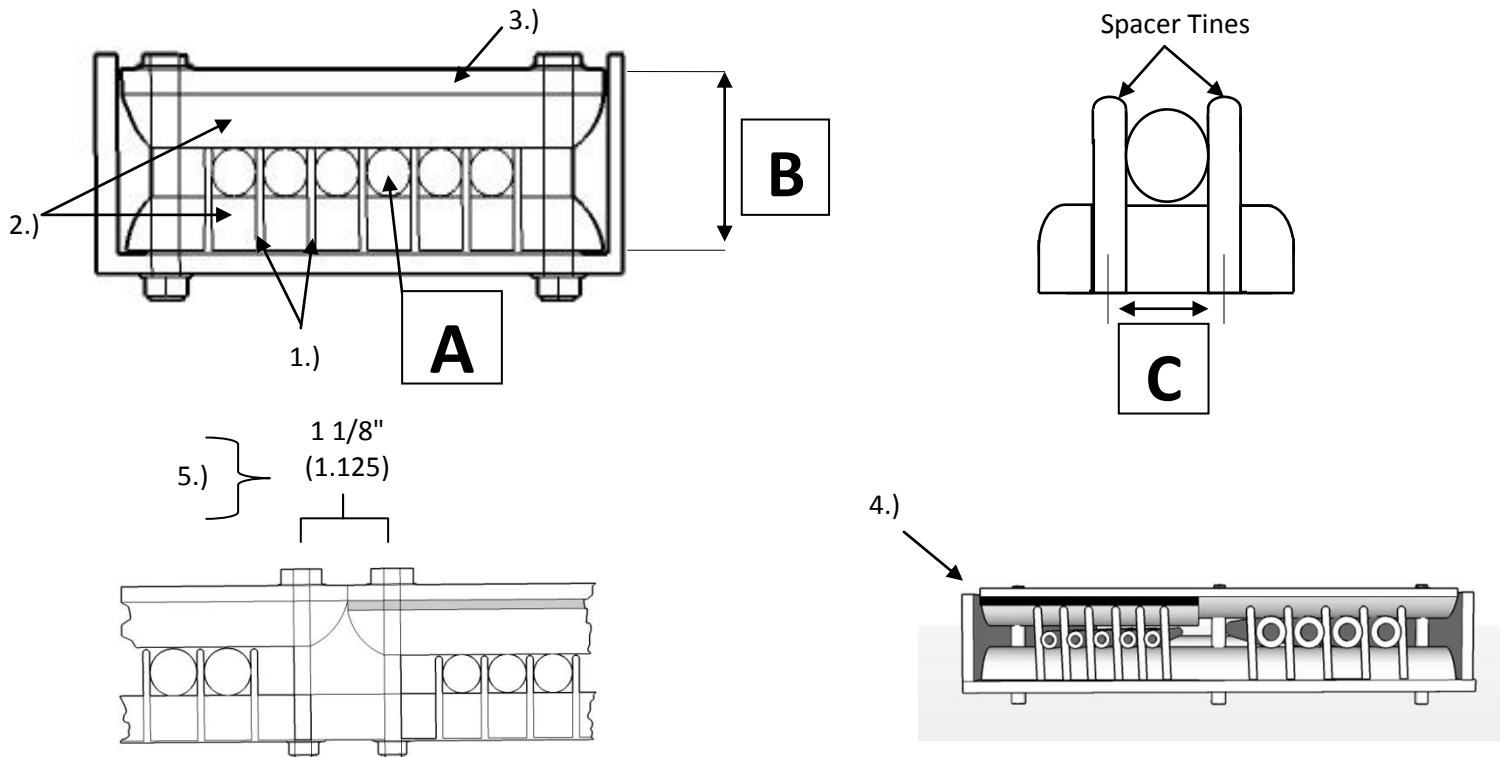


# T-SEP Assembly for 3" Channel Tray



Hardware Mounting Hole Access Diameter 3/8 (.375)	# of Mounted Hardware Access Holes	Hole Location	Tube Access Area
Hardware Used 1/4" (.250)	1	@ 1 5/16" (1.75) middle $\pm$ Typ.	2 1/4" (2.250)
Tolerance 1/8" (.125)	2	@ 3/8" (.375) ea end $\pm$ Typ.	1 1/2" (1.500)

A	B	C		
Tube Diameter	Height	Spacer Tine $\pm$ TYP.	Max tube 1 hole configuration	Max tube 2 hole configuration
1/4"	1 1/2"	.375"	6	4
3/8"	1 5/8"	.500"	4	3
1/2"	1 3/4"	.625"	4	2
3/4"	2"	.875"	2	2
1"	2 1/4"	1.250"	2	1



## Notes:

- 1.) SS316 Pneumatic Tubing Spacers: 1/4" TS-250M, 3/8 TS-375M, 1/2 TS-500M, 3/4 TS-750M, and 1" TS-100M also available with epoxy powder coated finish to Mil Spec # MIL-C-24712
- 2.) I-ROD: 1" half round is a UV-Stable, high impact thermoplastic Mfg. Deepwater Corrosion.
- 3.) Flat Bar to be 1" wide x 1/4" thick, stainless steel grade 316 or aluminum 6061-T6. Other thickness available upon request.
- 4.) Bar shims (1/8" thick x 1" wide) or flat washers are used to raise top flat bar retainer to level when tube size varies.
- 5.) When two T-SEP Assemblies rest in tandem, there exists a 1 1/8" (1.125) inch space where the assemblies meet. 1 1/8" (1.125) must be deducted from overall tube access area for each occurrence.