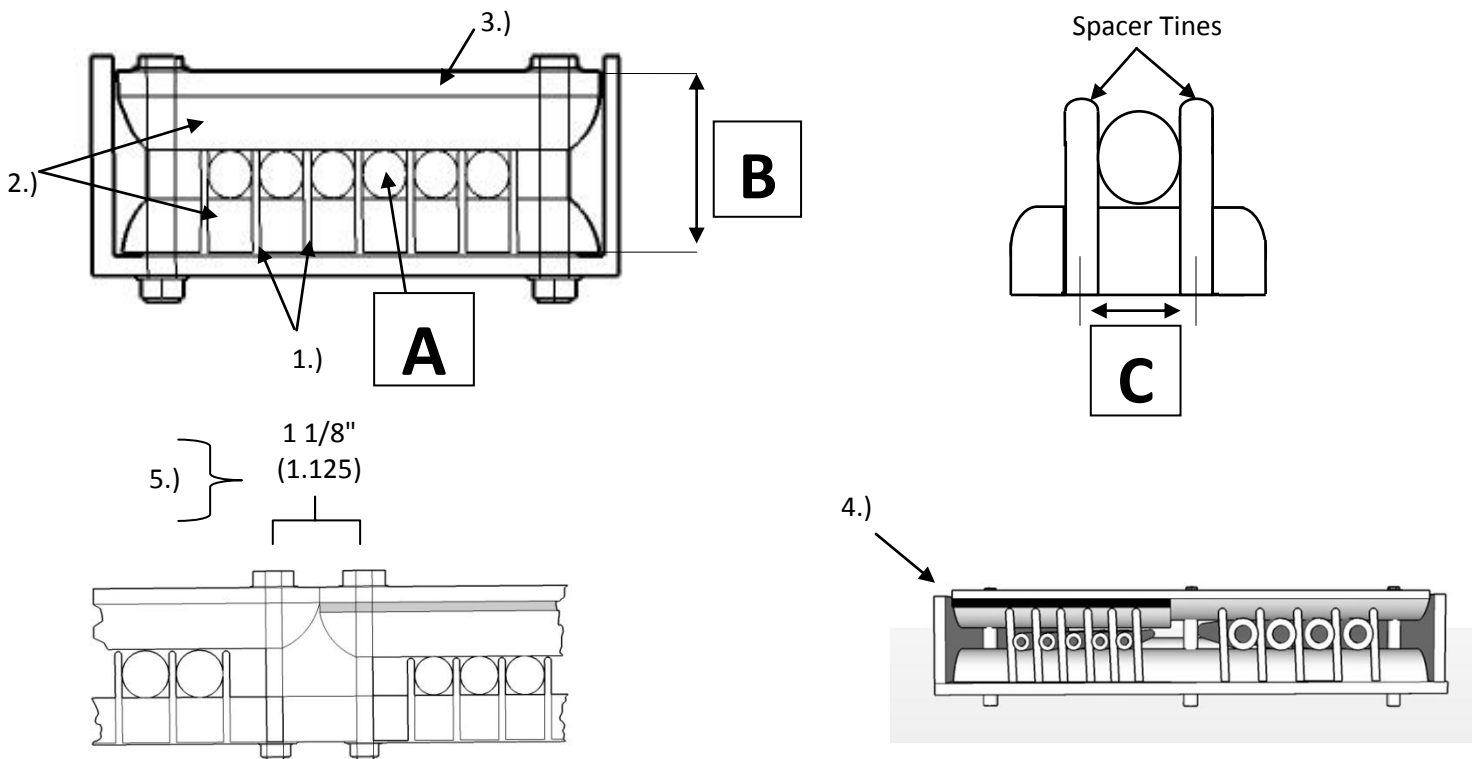


T-SEP Assembly for 6" Channel Tray



Hardware Mounting Hole Access Diameter 3/8 (.375)	# of Mounted Hardware Access Holes	Hole Location	Tube Access Area
Hardware Used 1/4" (.250)	2	(2) @ 3/8" (.375) ea end \bar{E} Typ.	4 1/4" (4.250)
Tolerance 1/8" (.125)	3	(2) 3/8" (.375) ea end \bar{E} Typ.	3 7/8" (3.875)
		(1) 2 11/16" (2.687) middle \bar{E} Typ. or specify location	
	4	(2) 3/8" (.375) ea end \bar{E} Typ.	3 1/2" (3.375)
		(2) Specify location	

A	B	C			
Tube Diameter	Height	Spacer Tine \bar{E} TYP.	Max tube 2 hole configuration	Max tube 3 hole configuration	Max tube 4 hole configuration
1/4	1 1/2	.375	11	10	9
3/8	1 5/8	.500	8	7	6
1/2	1 3/4	.625	6	6	5
3/4	2	.875	4	4	3
1	2 1/4	1.250	3	3	2



Notes:

- 1.) SS316 Pneumatic Tubing Spacers: 1/4" TS-250M, 3/8 TS-375M, 1/2 TS-500M, 3/4 TS-750M, and 1" TS-100M also available with epoxy powder coated finish to Mil Spec # MIL-C-24712
- 2.) I-ROD: 1" half round is a UV-Stable, high impact thermoplastic Mfg. Deepwater Corrosion.
- 3.) Flat Bar to be 1" wide x 1/4" thick, stainless steel grade 316 or aluminum 6061-T6. Other thickness available upon request.
- 4.) Bar shims (1/8" thick x 1" wide) or flat washers are used to raise top flat bar retainer to level when tube size varies.
- 5.) When two T-SEP Assemblies rest in tandem, there exists a 1 1/8 (1.125) inch space where the assemblies meet. 1 1/8" (1.125) must be deducted from overall tube access area for each occurrence.