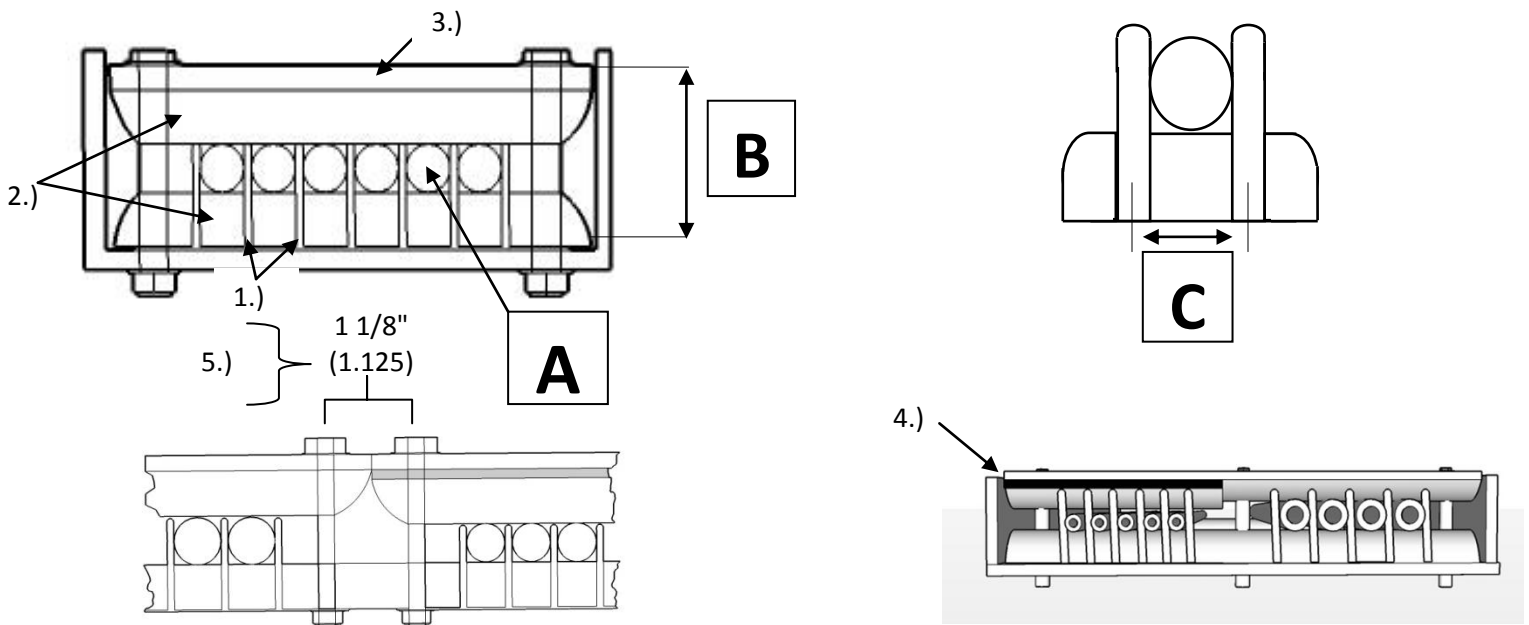


T-SEP Assembly for 8" Channel Tray



| Hardware Mounting Hole Access Diameter 3/8 (.375) | # of Mounted Hardware Access Holes | Hole Location | Tube Access Area |
|--|------------------------------------|---|------------------|
| Hardware Used 1/4" (.250) | 2 | (2) @ 3/8" (.375) ea end $\epsilon_{Typ.}$ | 6 1/8" (6.125) |
| Tolerance 1/8" (.125) | 3 | (2) @ 3/8" (.375) ea end $\epsilon_{Typ.}$ | 5 3/4" (5.750) |
| | | (1) @ 3 5/8" (3.625) middle $\epsilon_{Typ.}$ | |
| | 4 | (2) @ 3/8" (.375) ea end $\epsilon_{Typ.}$ | 5 3/4" (5.375) |
| | | (2)- Specify | |
| | 5 | (2) @ 3/8" (.375) ea end $\epsilon_{Typ.}$ | 5" (5.000) |
| | | (3)- Specify | |

| A | B | C | | | | |
|---------------|--------|-------------------------------|-------------------------------|-------------------------------|-------------------------------|-------------------------------|
| Tube Diameter | Height | Spacer Tine $\epsilon_{TYP.}$ | Max tube 2 hole configuration | Max tube 3 hole configuration | Max tube 4 hole configuration | Max tube 5 hole configuration |
| 1/4" | 1 1/2" | .375" | 16 | 15 | 14 | 13 |
| 3/8" | 1 5/8" | .500" | 12 | 11 | 10 | 10 |
| 1/2" | 1 3/4" | .625" | 9 | 9 | 8 | 8 |
| 3/4" | 2" | .875" | 7 | 6 | 6 | 5 |
| 1" | 2 1/4" | 1.250" | 4 | 4 | 4 | 4 |



Notes:

- 1.) SS316 Pneumatic Tubing Spacers: 1/4" TS-250M, 3/8 TS-375M, 1/2 TS-500M, 3/4 TS-750M, and 1" TS-100M also available with epoxy powder coated finish to Mil Spec # MIL-C-24712
- 2.) I-ROD: 1" half round is a UV-Stable, high impact thermoplastic Mfg. Deepwater Corrosion.
- 3.) Flat Bar to be 1" wide x 1/4" thick, stainless steel grade 316 or aluminum 6061-T6. Other thickness available upon request.
- 4.) Bar shims (1/8" thick x 1" wide) or flat washers are used to raise top flat bar retainer to level when tube size varies.
- 5.) When two T-SEP Assemblies rest in tandem, there exists a 1 1/8 (1.125) inch space where the assemblies meet. 1 1/8" (1.125) must be deducted from overall tube access area for each occurrence.